

CAMRECORD-SPRINTER SERIES

Sprinter-FHD

High-Speed Video Camera



- RESEARCH
 - TROUBLESHOOTING
 - SCIENTIFIC
-
- 1 908fps with 1 920x1 080pixels
 - Standalone operation
 - SSD backup storage up to 1 TB
 - fast 16 GB camera memory
 - TimeViewer user software included
 - wireless control via tablet PC

Sprinter-FHD High-Speed Video Camera

Optronis

Make time visible

DESCRIPTION

Sprinter-FHD of the CamRecord-Sprinter series is a high resolution, high-speed camera with integrated frame memory. Various trigger and synchronization features makes the camera an ideal tool for research and industrial applications. The camera is controlled by TimeViewer software via GigE interface or WiFi connection.

PERFORMANCE (EXAMPLES, TYP)

Resolution (H x V)	Framerate	Recording time
1 920 × 1 080	1 908 fps	4.3 s
1 280 × 960	2 140 fps	6.5 s
1 280 × 720	2 850 fps	6.5 s
640 × 480	4 260 fps	13 s
384 × 288	7 000 fps	22 s
256 × 128	15 500 fps	33 s
256 × 8	170 000 fps	40 s

INTERFACES

Trigger input (TI)	TTL, 3.3 - 5 V, optically isolated, recording of sequence
Synchronisation input (SI)	TTL, 3.3 - 5 V, optically isolated, frame synchronization
Synchronisation output (TO)	TTL, 2.0 - 4.0 V, optically isolated, frame synchronous output signal
Programmable output (PO)	TBD
HDMI	video output
USB	WiFi dongle
GigE	control and download

MODELS

Sprinter-FHD-M	monochrome Camera
Sprinter-FHD-C	color Camera

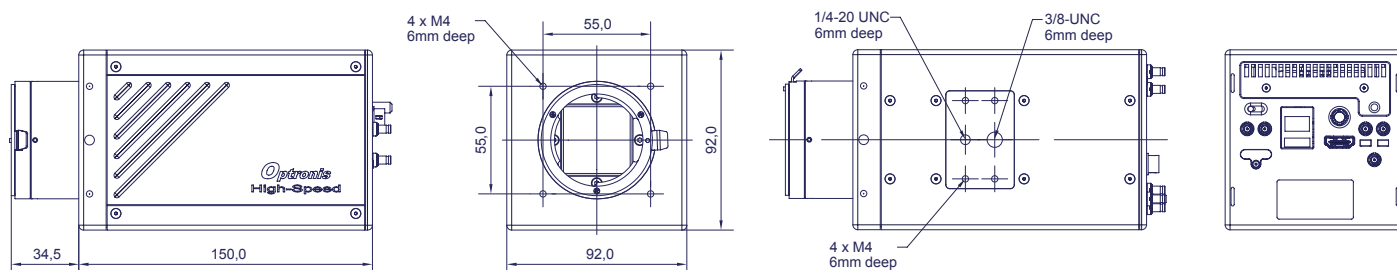
SPECIFICATIONS

Sensor resolution	1 920 × 1 080
Frame rate @ max. sensor res.	20 .. 1 908 fps
Memory	16 GB internal
Image sensor	CMOS, Global Shutter
Exposure time	4 µs - 1/framerate
Active area	19.2 mm x 10.8 mm
Sensor diagonal dimension	22.0 mm
Pixel size	10.0 µm
A/D conversion	8 Bit
Dynamic	48 dB
Sensitivity	20 V/lux × s @ 550 nm
Trigger modes	internal free-run, switch, rising or falling edge, pre- and post-trigger
Power	12 VDC
Weight	1400 g without mount
Dimensions	150 mm x 92 mm x 92 mm
Housing	lightweight anodised aluminium
SSD harddrive bay	data storage and backup
PC software	TimeViewer for Windows (support for version 7, 8 and 10) for capture, video playback, export, export, image analysis with object tracking
Scope of delivery	Camera with 256 GB SSD, TimeViewer, Power supply, Docking station, WiFi dongle, GigE-cable and manual

OPTIONS

CR-S-FM	F-Mount lens adapter
CR-S-FMG	F-Mount lens adapter with aperture control
CR-S-CM	C-Mount lens adapter

TECHNICAL DRAWING



CONTACT INFORMATION

Optronis GmbH
Ludwigstraße 2
77694 Kehl
Germany

Phone: +49 7851 91 26 - 0
Fax: +49 7851 91 26 - 10
info@optronis.com
www.optronis.com

The information given herein is believed to be reliable, however Optronis makes no warranties as to its accuracy or completeness. Data sheet is subject to modifications at any time. 1/2019